

Report for the Labour-Management Network March 2025

Monthly Statistics

Reporting Month	Fatalities	Critical Injuries	Total
Jan. 1 – Jan. 31, 2025	2	16	18
Jan. 1 – Jan. 31, 2024	0	19	19

Fatality & Critical Injury Year-to-Date Overview – Construction

Reporting Months	Fatalities	Critical Injuries	Total
Jan. 1 – Jan. 31, 2025	2	16	18
Jan. 1 – Jan. 31, 2024	0	19	29

Helping you achieve compliance on construction projects and window cleaning operations

[General requirements](#)

[Access to and egress from a work area](#)

[Excavations](#)

[Fall protection and roofing re-shoring](#)

[Equipment](#)

[Electrical hazards](#)

[Hygiene](#)

[Forms, formwork, falsework, and](#)

[Housekeeping, fire protection, public way protection, traffic control, and hot tar or bitumen tankers or kettles](#)

[Asbestos on construction projects](#)

[Diving operations](#)

[Window cleaning operations](#)

[Workplace Hazard Alerts | Ontario.ca](#)

Disclaimer: This information has been prepared to assist workplace parties in understanding their rights and duties under the Occupational Health and Safety Act (OHSA) and its regulations. This information does not constitute legal advice. To determine your rights and duties under the OHSA, please contact your legal counsel or refer to the legislation.

Section 1 – Senior Manager's Comment

Throughout the Winter season, there have been many slips, trips and falls resulting in a variety of injuries, including critical injuries such as fractured ankles and broken wrists. These injuries are often not related to the task or work being performed, but rather they occur in what should be lower risk activities such as stepping out of a vehicle, accessing or egressing an area of the site, or walking through the site itself.

As we transition into Spring, we can expect weather changes day-to-day and even hour-to-hour. What may be frozen ground in the morning may turn to slippery mud by the afternoon; or ice that had formed overnight may become accumulated water as temperatures rise throughout the day.

It is important to not only recognize the changes in site conditions as they occur, but also **how the changes can and will impact on the actual and potential risk profile of the work to be done**. For example, the accumulation of mud on boots increases the risk of a misstep or fall from a ladder when the rungs become soiled. Even good practices such as the use of salt or sand for a slippery area needs to be assessed to ensure that the good intention of using salt and sand to prevent a slip doesn't cover up or hide a hazard that will lead to a trip.

Constructors and Employers have a responsibility to keep surfaces reasonably clear and safe from hazards, but with the speed at which conditions can change, they rely upon workers following their duty to report unsafe conditions as well. All workplace parties need to work together to be vigilant, maintain due diligence, and ensure constantly changing conditions are identified and properly managed appropriately to prevent these types of injuries.

Sincerely, Francois Malette

A/Senior Manager
Construction Health and Safety Program
Occupational Health and Safety Branch
Ontario Ministry of Labour, Training and Skills Development

Section 2 – What's New

No updates this month.

For the latest what's **new** – MLITSD articles, see: [What's New!](#)

Section 3 – Court Bulletins

Construction Project Supervisor Fined \$10,000 After Workplace Injury

Convicted: Ryan Wilkes, a project supervisor employed by The Lake Partnership Inc.

Location of Workplace: A home construction project at 229 Riverside Drive, Toronto, Ontario.

Description of Offence: A worker fell through an opening in the floor of a home under construction. Mr. Wilkes failed, as a supervisor, to ensure that the worker was protected by a guardrail or protective covering as required by [section 26.3\(2\)](#) of Ontario Regulation 213/91, contrary to [section 27\(1\)\(a\)](#) of the *Occupational Health and Safety Act*.

Date of Offence: December 20, 2022

Date of Conviction: September 27, 2024

Penalty Imposed:

- Following a guilty plea in the Provincial Offences Court in Toronto, Mr. Wilkes was fined \$10,000 by Justice of the Peace Ana C. Costa; Crown Counsel was Christine Perruzza.
- The court also imposed a 25 per cent victim fine surcharge as required by the *Provincial Offences Act*. The surcharge is credited to a special provincial government fund to assist victims of crime.

Background:

- On December 20, 2022, Mr. Wilkes was the project supervisor at the site, which included workers from Mr. Wilkes' company and two framing subcontractors.
- There were openings in the floor at each level of the building for a planned elevator shaft. The opening to the elevator shaft on the first floor was covered by sheets of insulation made of dense polystyrene, featuring the words "DO NOT STEP."

- While a framer was working on the first floor, they stepped onto the material covering the opening for the elevator shaft and fell through to the basement floor.
- A Ministry of Labour, Immigration, Training and Skills Development investigation found that the polystyrene covering did not meet the requirements for a protective covering set out in [section 26.3\(2\)](#) of the Construction Regulation, nor was there an adequate guardrail system in place around the opening as required by section 26.3(2).
- Mr. Wilkes failed, as a supervisor, to ensure that a worker worked with the protective devices, measures and procedures required by [section 26.3\(2\)](#) of Ontario Regulation 213/91, contrary to [section 27\(1\)\(a\)](#) of the *Occupational Health and Safety Act*.

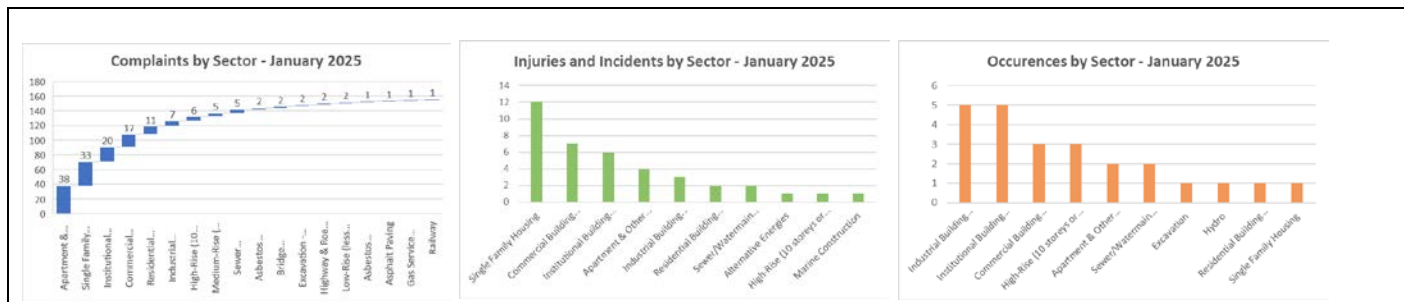
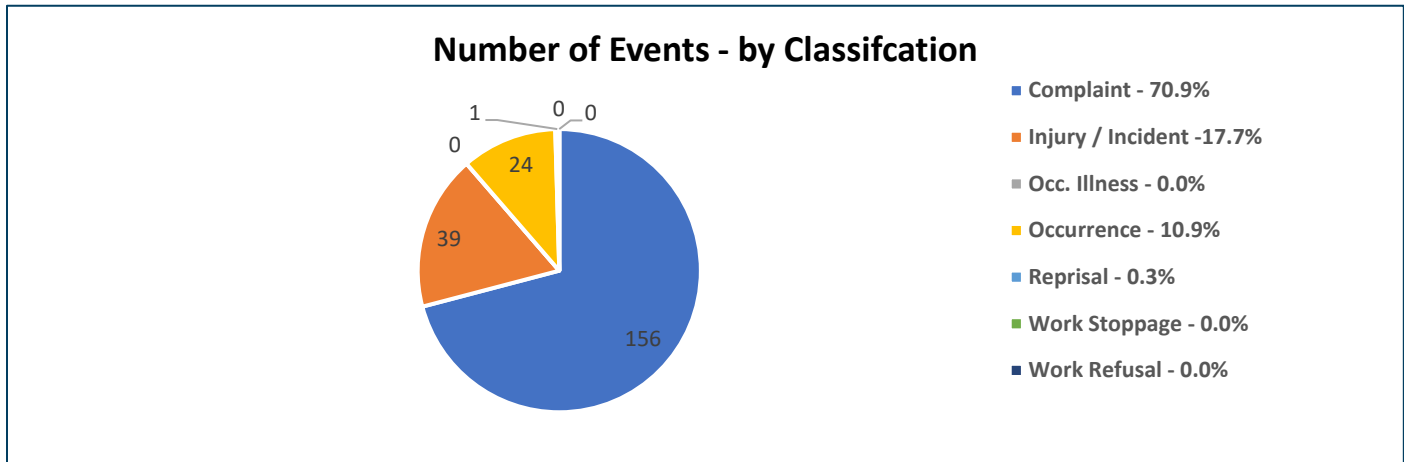
Considerations from a Root Cause point of view:

- The floor opening was covered and marked so it is evident the hazard was identified, however:
 - Was the supervisor aware of the requirements for a guardrail as the preferred method of fall protection?
 - If a guardrail was not practical, was the supervisor aware of the floor covering requirements?
 - Was the proper material for a floor covering not conveniently available?
 -

Court Bulletins can be found here: <https://news.ontario.ca/en>

Section 4 – Enforcement Trends – January 2025

MLITSD Construction Inspectors conducted **1,866** field visits during the month of January 2025; of which **414** were an initial response to an event. The breakdown of events is as follows:



Year in Review – 2024

From January 1 to December 31, 2024, there were **18** fatalities and **378** critical injuries in the construction sector.

In total, the Construction Health and Safety Program (CHSP) Inspectors conducted **19,054** field visits. The top 10 sectors listed below accounted for **89.6%** of all visits.

Single Family Housing	6,182
Commercial Building Construction	3,471
Apartment & Other Multiple Housing	3,092
Institutional Building Construction	1,202
Industrial Building Construction	1,066
Sewer/Watermain Construction	699

Residential Building Construction	687
Highway & Road Construction	347
Excavation	334

The CHSP Inspectors responded to:

Complaints	3,536
Injuries/Incidents	946
Occurrences	487
Reprisals	33
Work Refusals	17
Occupational Illnesses	3
Work Stoppages	1

Campaigns

Our current campaigns have focussed on falls from heights in single family residential and multi-family residential and struck-by hazards. Below are statistics from Apr.1 – Dec.31, 2024.

Falls:

- **Field Visits: 5,233** (with 456 support role activities)
- **Workplaces: 3,874**
- **Orders: 17,278** (Incl. 1,870 stop work)
- **Req'ts: 377**

Struck By:

- **Field Visits: 4,424** (with 336 support role activities)
- **Workplaces: 3,544**
- **Orders: 9,438** (Incl. 785 stop work)
- **Req'ts: 351**

Section 5 – Critical Injuries & Fatalities

Year-to-Date Overview and Comparison - Construction Sector

Injury Type	2025 January	2025 January 1 – January 31
Critical	16	16

Injury Type	2024 January	2024 January 1 – January 31
Critical	19	19

NOTE: These figures represent preliminary data and are not to be considered official statistics from the Ministry of Labour, Immigration, Training and Skills Development. Official statistics will be issued quarterly by the Program Analysis, Evaluation and Outcomes Unit of the Occupational Health and Safety Branch of the Ministry of Labour, Immigration, Training and Skills Development. Data are subject to change due to updates in the enforcement database. Only events reported to the ministry are included here. Except for fatalities, event categories in the ministry's data set are based on what was assigned at the time of the initial report to the ministry. The reported event category may not represent what occurred at the workplace.

Critical Injuries – January 2025

January 2025 CRITICALS	RESS	INST	RESM	INDU	ROAD	EXCA	COMM	NECC	RAIL	POWP	ETTL	HYDR	SEWW	BRID	TUNN	TELE	WIND	MARE	PAVE	GAS	MINP	PIPE	CAIS	TOTAL	
Falls from Heights																									0
Falls From Equipment	1		1	1																					3
Falls from Ladders		2	1				1																		4
Same level slips and trips		2	1																1						4
Struck by equipment																									0
Struck by material collapse of structure							1						1												2
Electrical Contact																									0
Excavation Collapse																									0
Other, including multiple factors, i.e. fall resulting from scaffold being struck by equipment.		2	1																						3
TOTAL																									16

Critical Injuries - Year to Date 2025

YTD 2025 CRITICALS	RESS	INST	RESM	INDU	ROAD	EXCA	COMM	NECC	RAIL	POWP	ETTL	HYDR	SEWW	BRID	TUNN	TELE	WIND	MARE	PAVE	GAS	MINP	PIPE	CAIS	TOTAL	
Falls from Heights																									0
Falls From Equipment	1		1	1																					3
Falls from Ladders		2	1				1																		4
Same level slips and trips		2	1																1						4
Struck by equipment																									0
Struck by material collapse of structure							1						1												2
Electrical Contact																									0
Excavation Collapse																									0
Other, including multiple factors, i.e. fall resulting from scaffold being struck by equipment.		2	1																						3
TOTAL																									16

Ministry of Labour, Immigration, Training and Skills Development
Occupational Health and Safety Branch, Construction Health and Safety Program



	Date of Incident	Municipality	Sector	Occupation	Details (As reported to MLITSD)	Reported Cause
1	January 2, 2025	Barrie	Single Family Housing	Labourer	Worker sustained fractured wrist while lifting plywood	NEC - Construction
2	January 7, 2025	Toronto	Marine Construction	Truck Driver	Worker sustained a fractured ankle after slipping while exiting his vehicle	Fall – Same Level
3	January 7, 2025	Toronto	Institutional Building Construction	Labourer	Worker sustained a broken arm after tripping over a sheet of plywood	Fall – Same Level
4	January 8, 2025	Toronto	Commercial Building Construction	Labourer	Worker lost vision in his right eye after being struck by a tarp	Struck by - Material
5	January 8, 2025	Embrun	Single Family Housing	Mason	Worker sustained a critical injury after falling through scaffold planking	Fall – From Equipment
6	January 14, 2025	Toronto	Commercial Building Construction	Worker	Worker suffered a broken leg after she fell from a ladder	Fall – From Ladder
7	January 14, 2025	Ottawa	Institutional Building Construction	Mason	Worker suffered a broken arm after falling from a ladder	Fall – From Ladder

Ministry of Labour, Immigration, Training and Skills Development
Occupational Health and Safety Branch, Construction Health and Safety Program



	Date of Incident	Municipality	Sector	Occupation	Details (As reported to MLITSD)	Reported Cause
8	January 20, 2025	Caledon	Residential Building Construction	Worker	Worker suffered a critical injury after slipping and falling	Fall – Same Level
9	January 20, 2025	Brampton	Sewer/Watermain Construction	Operator	Worker suffered a broken foot after a form wall fell on it	Struck by - Material
10	January 20, 2025	Ottawa	Apartment & Other Multiple Housing	Pipefitter	Worker suffered a fracture after falling from a ladder	Fall – From Ladder
11	January 21, 2025	Scarborough	Apartment & Other Multiple Housing	Carpenter	Worker fell, resulting in a significant loss of blood	Fall – From Equipment
12	January 21, 2025	Markham	Single Family Housing	Labourer	Worker fractured his elbow after falling from the egress ramp	Fall – From Equipment
13	January 23, 2025	Burlington	Institutional Building Construction	Concrete Worker	Worker suffered a broken wrist after tripping over a pallet	Fall – Same Level
14	January 25, 2025	Mississauga	Apartment & Other Multiple Housing	Labourer	Worker suffered a broken leg as a result of sitting in the bucket of a bobcat in operation	NEC - Construction

SECTOR DESCRIPTION	SHORT DESC
Asbestos Removal - Type 1	ASB1
Asbestos Removal - Type 2	ASB2
Asbestos Removal - Type 3	ASB3
Bridge Construction	BRID
Cable	CABL
Caisson	CAIS
Cofferdam	COFF
Commercial Building Construction	COMM
Diving Construction	DCON
Diving Environmental	DENV
Diving Industrial	DIND
Diving Mining	DMIN
Electrical Towers & Transmission Lines	ETTL
Excavation	EXCA
Gas Service Connection	GAS
Excavation - Grading	GRAD
Hydro	HYDR
Industrial Building Construction	INDU
Institutional Building Construction	INST
Marine Construction	MARE
Mining Plant Construction	MINP
Moving of a Building/Structure	MOVE
NEC – Construction (NEC: not elsewhere captured)	NECC
NEC – Diving (NEC: not elsewhere captured)	NECD
Asphalt Paving	PAVE
Pipeline	PIPE
Hydroelectric Power Plants & Rel	POWP
Railway	RAIL
Apartment & Other Multiple Housing	RESM
Single Family Housing	RESS
Highway & Road Construction	ROAD
Sewer/Watermain Construction	SEWW
Shaft Construction	SHAF
Shipbuilding & Repair	SHIP
Subway	SUBW
Telephone	TELE
Trenching	TREN
Tunnel	TUNN
Well Drilling	WELL
Window Cleaning Services	WIND

