

Traumatic injuries

Each year in IHSA's Annual Report, we provide statistics on **traumatic injuries**, **traumatic fatalities**, and **occupational illnesses**. To put this data in perspective, we compare the current year to previous years.

In 2020, however, the Workplace Safety and Insurance Board (WSIB) changed from a rate group classification system to the **North American Industry Classification System (NAICS)**. This prevents us from presenting a valid comparison to previous years' data.

The WSIB data is now presented according to the industry classes that IHSA supports. Table 1 shows the 2020 injury statistics for:

- Class G - Construction
- Class F - Transportation and Warehousing
- Class C - Utilities.

Tables 2, 3, and 4 show the allowed lost-time injuries (LTIs) for each class broken down by subclasses.

NOTE: Class C - Utilities does not include any subclasses.

Table 1: Overall Injury Performance by Class 2020

Measure	Class G - Construction	Class F - Transportation and Warehousing	Class C - Utilities	All IHSA Classes
Total Injury Rate	3.95	3.25	1.92	3.60
Total Injury Count	17,176	7,267	863	25,306
Allowed Non-lost-time Injury (NLTI) Rate	2.96	1.96	1.57	2.56
Allowed NLTI Count	12,886	4,378	704	17,968
Allowed Lost-time Injury (LTI) Rate	0.99	1.29	0.35	1.04
Allowed LTI Count	4,290	2,889	159	7,338
Traumatic Fatalities Count	20	10	2	32
Full-time Equivalent Workers (FTEs)	434,625	223,359	44,842	702,826

Source: WSIB/EIW April 1, 2020 to March 31, 2021 Snapshot



The highest allowed LTI rates in 2020 were:

2.18 Subclass F2 – Air, Transit, Ground Passenger, Recreational and Pipeline Transportation, Courier Services, and Warehousing

1.56 Subclass G3 – Foundation, Structure, and Building Exterior Construction

To address this, IHSA marketing campaigns targeted driving hazards and falls in residential construction (see pages 10-11).

Table 2: Allowed LTIs by Construction Subclasses 2020

Subclass	LTI Count	LTI Rate	FTEs
G1 - Building Construction	824	0.87	94,957
G2 - Infrastructure Construction	366	0.74	49,503
G3 - Foundation, Structure, and Building Exterior Construction	1,114	1.56	71,527
G4 - Building Equipment Construction	1,136	0.86	131,574
G5 - Specialty Trades Construction	841	0.97	87,064
Undefined	9	—	—
Total	4,290	0.99	434,625



Source: WSIB/EIW April 1, 2020 to March 31, 2021 Snapshot

Table 3: Allowed LTIs by Transportation Subclasses 2020

Subclass	LTI Count	LTI Rate	FTEs
F1 - Rail, Water, Truck Transportation, and Postal Service	1,344	0.88	152,424
F2 - Air, Transit, Ground Passenger, Recreational and Pipeline Transportation, Courier Services, and Warehousing	1,543	2.18	70,935
Undefined	2	—	—
Total	2,889	1.29	223,359

Table 4: Allowed LTIs by Utilities Class 2020

Class	LTI Count	LTI Rate	FTEs
Class C - Utilities	158	0.35	44,842
Undefined	1	—	—
Total	159	0.35	44,842

Traumatic injuries

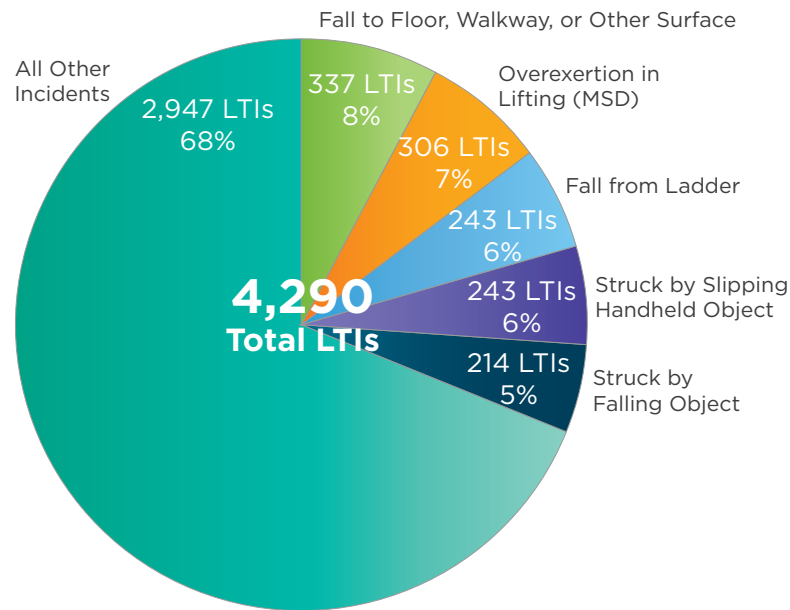
IHSA considers certain safety hazards to be **priority hazards** because of the frequency and severity of the injuries they may cause. These hazards are given increased attention in terms of making our members aware of them and developing resources to prevent or control them.

For our industries, the priority hazards are:

- Motor-Vehicle Incidents (MVIs)
- Falls
- Struck by Objects
- Musculoskeletal Disorders (MSDs).

Charts 1, 2, and 3 show the top five types of incidents that resulted in a lost-time injury (LTI) for each industry class that IHSA supports.

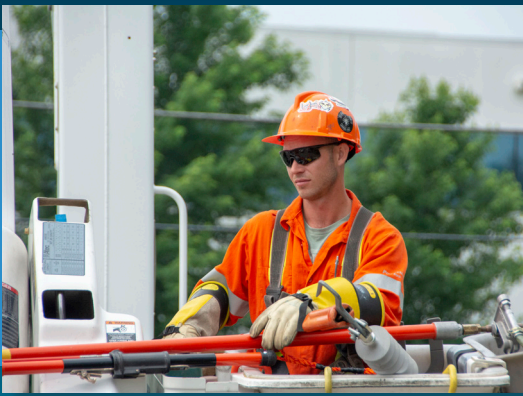
Chart 1: Top 5 Incident Types for Allowed LTIs in Construction 2020



Source: WSIB/EIW April 1, 2020 to March 31, 2021 Snapshot



For Class G - Construction, the top 5 types of incidents were related to falls (14%), struck-bys (11%), and MSDs (7%)



Training and orientation are key for reducing lost-time injuries to vulnerable workers

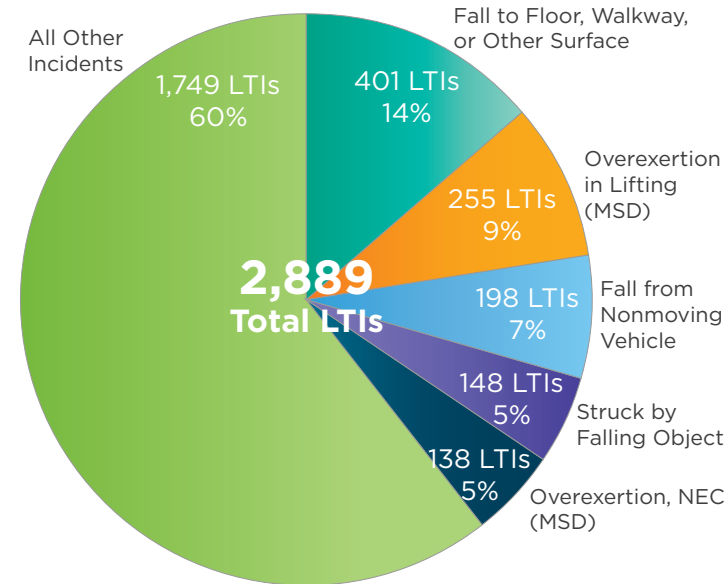
2,047 LTIs

New workers in 2020 (those who worked 28 days or fewer)

1,082 LTIs

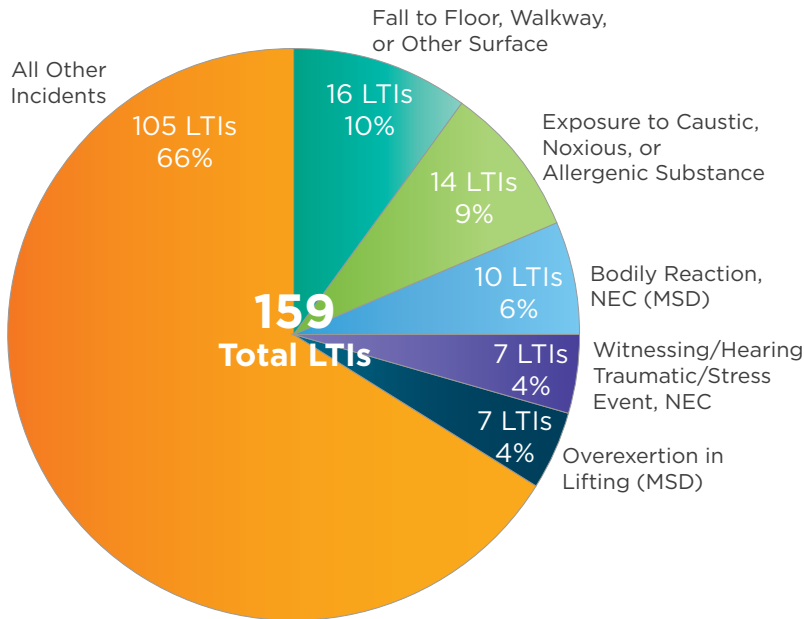
Young workers in 2020 (those under 25 years of age)

Chart 3: Top 5 Incident Types for Allowed LTIs in Transportation and Warehousing 2020



For Class F - Transportation, the top 5 types of incidents were related to falls (21%), MSDs (14%), and struck-bys (5%)

Chart 2: Top 5 Incident Types for Allowed LTIs in Utilities 2020



NOTE: NEC stands for Not Elsewhere Classified.

Traumatic fatalities

Despite our best efforts, a total of 32 Ontario workers in IHSA's industry classes lost their lives on the job in 2020. As has been the case for many years, the top three causes of traumatic fatalities for IHSA members were **priority hazards**:

- Motor-Vehicle Incidents (MVIs)
- Falls
- Struck by Objects.

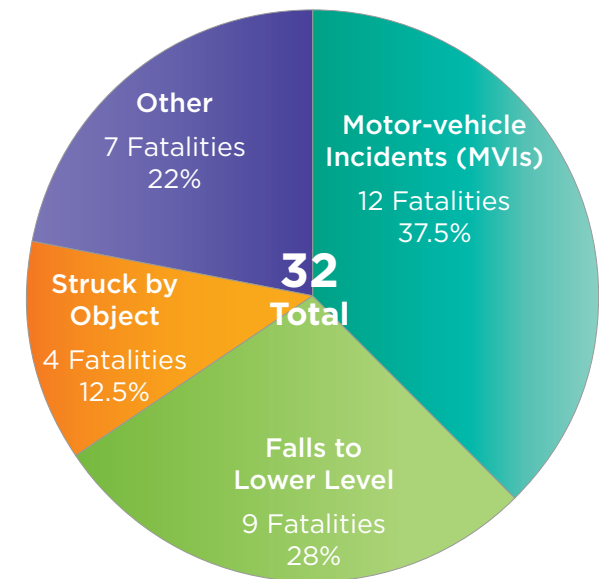
Charts 4, 5, and 6 go into more detail about the types of incidents that caused these fatalities, the industry classes and subclasses where the workers were employed, and the ages of the workers who lost their lives in 2020.

IHSA continues to raise public awareness about these "killer" priority hazards and produce training and resources that are designed to prevent injuries and fatalities resulting from them.

Table 5: Traumatic Fatalities by Incident 2020

Fall to Lower Level	9
Floor of Building	3
Floors, Walkways, Ground Surfaces, Unsp.	1
Ground	4
Stairs, Steps—Outdoors	1
Highway Accident	6
Pickup Truck	1
Semitrailer, Tractor Trailer, Trailer Truck	2
Truck, NEC	1
Truck, Unspecified	2
Pedestrian Struck by Vehicle, Mobile Equipment	4
Highway Vehicle, Unspecified	2
Semitrailer, Tractor Trailer, Trailer Truck	2
Struck By Object	4
Concrete Blocks, Cinder Blocks	1
Structural Stones or Slabs, NEC	1
Vehicle and Mobile Equipment Parts, NEC	1
Walls	1
Non-highway Accident, except Rail, Air, Water	2
Lawn Mowers—Riding	1
Truck, NEC	1
Other	7
Total Fatalities	32

Chart 4: Traumatic Fatalities by Priority Hazards 2020



Source: WSIB/EIW April 1, 2020 to March 31, 2021 Snapshot



Subclass G3 – Foundation, Structure, and Building Exterior Construction



Subclass F1 – Rail, Water, Truck Transportation, and Postal Service

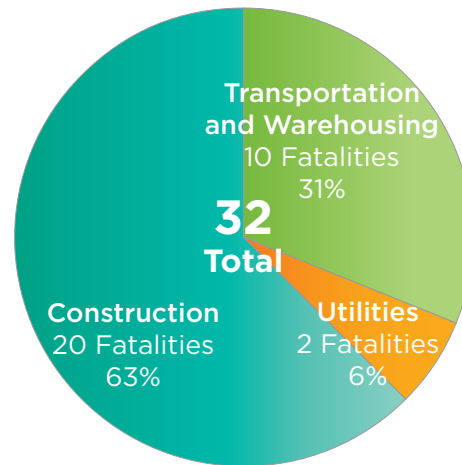
For **Class G – Construction** most fatalities occurred in **subclass G3**, which also had the highest rate of lost-time injuries (LTIs).

For **Class F – Transportation and Warehousing** most fatalities occurred in **subclass F1**, whereas the highest LTI rate was in F2.

To address priority hazards that resulted in fatalities, IHSA promoted Falls Awareness Week (see page 15), developed marketing campaigns to address falls from heights, distracted driving, and driver fatigue (see pages 10-11), and created new eLearning courses on distracted driving, preventing MVIs, and preventing falls in transportation (see pages 28-30).

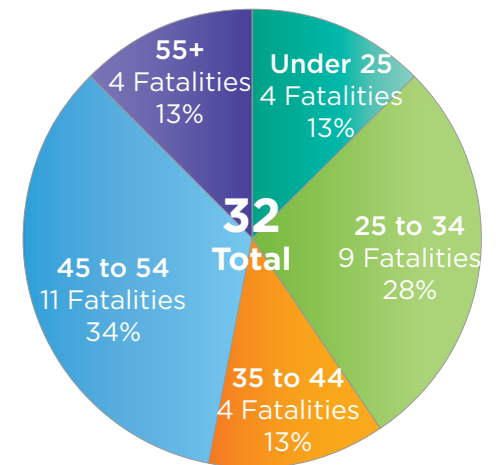


Chart 5: Traumatic Fatalities by Class 2020



Class G – Construction	20
G1 – Building Construction	3
G2 – Infrastructure Construction	3
G3 – Foundation, Structure, and Building Exterior Construction	7
G4 – Building Equipment Construction	5
G5 – Specialty Trades Construction	2

Chart 6: Traumatic Fatalities by Age Group 2020



Class F – Transportation and Warehousing	10
F1 – Rail, Water, Truck Transportation, and Postal Service	8
F2 – Air, Transit, Ground Passenger, Recreational and Pipeline Transportation, Courier Services, and Warehousing	2
Class C – Utilities	2

Source: WSIB/EIW April 1, 2020 to March 31, 2021 Snapshot

Occupational illness

While workplace safety hazards can lead to traumatic injuries and fatalities, workplace health hazards can lead to **serious diseases and disorders** that can result in **lifelong impairment** (e.g., noise-induced hearing loss) or death (e.g., mesothelioma or lung cancer).

Many of the illnesses associated with these health hazards do not develop until many years after exposure. Because of this lag time, health hazards seem less serious than safety hazards. The truth is, however, that fatalities from occupational illnesses far outnumber those from traumatic events.

For IHSA industries, the WSIB allowed **402 fatal occupational disease claims** over the past ten years (2011–20), an average of 40 fatalities per year.

Fatal Occupational Illness

Construction

In construction work, a 10-year total of 351 fatal claims were allowed by the WSIB due to occupational disease between 2011 and 2020. Nearly 95% of these fatalities were caused by exposure to asbestos, which resulted in diseases such as mesothelioma, lung cancer, and asbestosis.

The occupations that most frequently experienced a fatal occupational illness in this sector were:

- Pipefitters and plumbers (25%)
- Construction labourers (11%)
- Metal shapers and formers (11%)
- Carpenters and related trades (8%)
- Electricians (8%).



Transportation and Warehousing

For transportation, the WSIB allowed a 10-year total of 38 fatal claims due to occupational disease (2011–20). Exposure to asbestos accounted for 45% of these fatalities, followed by exposure to silica at 8%.

The occupations that most frequently experienced occupational disease fatalities were:

- Transport operators (25%)
- Mechanics and repairers (16%)
- Service workers (13%)
- Mining and quarrying workers (11%).

Utilities

For the utilities sector, the WSIB allowed a 10-year total of 13 fatal claims due to occupational disease (2011–20). Exposure to asbestos accounted for 100% of these fatalities.

The occupations that most frequently experienced a fatal occupational illness were electrical and utility workers at nearly 40% and stationary engine and utilities equipment operators at 23%.



IHSA performed 629 in-person consultations to make sure a company's health protocols were sufficient to protect their essential workers from exposure to COVID

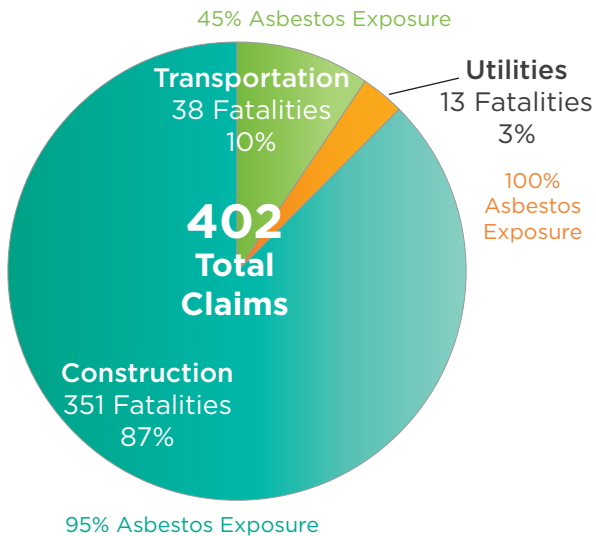


Infection Prevention and Control eLearning is also available in French

Take advantage of IHSA's in-class and eLearning programs to help prevent exposure to occupational health hazards. Online programs include:

- Basics of Asbestos (in 4 languages)
- Basics of Hearing Protection
- Basics of Skin Care
- Basics of Silica
- Infection Prevention and Control
- WHMIS 2015

Chart 7: 10-Year Occupational Disease Fatalities by Class 2011-2020



Source: WSIB/EIW 2011 to 2020 Snapshot

Did you know?

IHSA has a comprehensive Occupational Health section on our website with resources on dealing with biological, chemical, and physical health hazards:

ihsa.ca/Occupational_Health.aspx

Non-Fatal Occupational Illnesses

Construction

Between 2011 and 2020, the WSIB allowed a 10-year total of 13,050 non-fatal claims in construction. Exposure to excessive noise accounted for 55% of these claims, followed by asbestos exposure at 9%.

The occupations that experienced the most non-fatal occupational illnesses were:

- Construction labourers (22%)
- Electricians (10%)
- Pipefitting, plumbing, and related trades (9%)
- Carpenters and related trades (9%)

Transportation and Warehousing

Between 2011 and 2020, the WSIB allowed a 10-year total of 5,124 non-fatal claims in transportation. Exposure to excessive noise accounted for nearly 60% of these claims, followed by insect bites (8%) and exposure to chemicals (4%).

The occupations that experienced the most non-fatal occupational illnesses were

Transport operators (nearly 50%) and Materials handling and related workers (10%).

Utilities

Between 2011 and 2020, the WSIB allowed a 10-year total of 1,877 non-fatal claims in the utilities sector. Exposure to excessive noise accounted for over 30% of these claims, followed by insect bites (23%), asbestos exposure (7%), and Poison Ivy contact (7%).

The occupation that experienced the most non-fatal occupational illnesses was electricians at 40%.

Noise-induced Hearing Loss

Exposure to excessive noise has led to a large number of claims for noise-induced hearing loss (NIHL). NIHL is by far the most common and fastest-growing occupational disease for workers in IHSA rate groups. Working with power tools and working around loud equipment are common sources of noise that can cause this permanent and debilitating impairment.

